

QUICK START GUIDE

THIS GUIDE RELATES TO THE FOLLOWING STYLESHEETS:

PRODUCT: OS TERRAIN® 50

DATA FORMAT: ESRI SHAPEFILE (SHP)

STYLESHEET FORMAT: STYLED LAYER DESCRIPTORS (SLD)

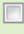



The stylesheets have been designed to work with the data as it is supplied

- 1 Either fork the stylesheets on [GitHub](#) or [download](#) them and navigate to the directory that matches your data format, stylesheet format and style preference.
- 2 Load your OS Terrain 50 contour data into GeoServer.
- 3 Add the styles. If using the GUI then navigate to Styles > Add a new style > Browse and select to add each file in turn.
- 4 Publish these styles with the data. If using the GUI then navigate to Layers > Add a new resource and choose them from the relevant database to add each file in turn. Click on publish, configure settings and then choose the matching style before saving.
- 5 To create OS Terrain 50 in GeoServer you will need to create a Layer Group. If using the GUI then navigate to Layer Groups > Add new layer group > Add Layer and choose each layer in turn to create the following layer order:

Layers

[Add Layer...](#)

[Add Layer Group...](#)

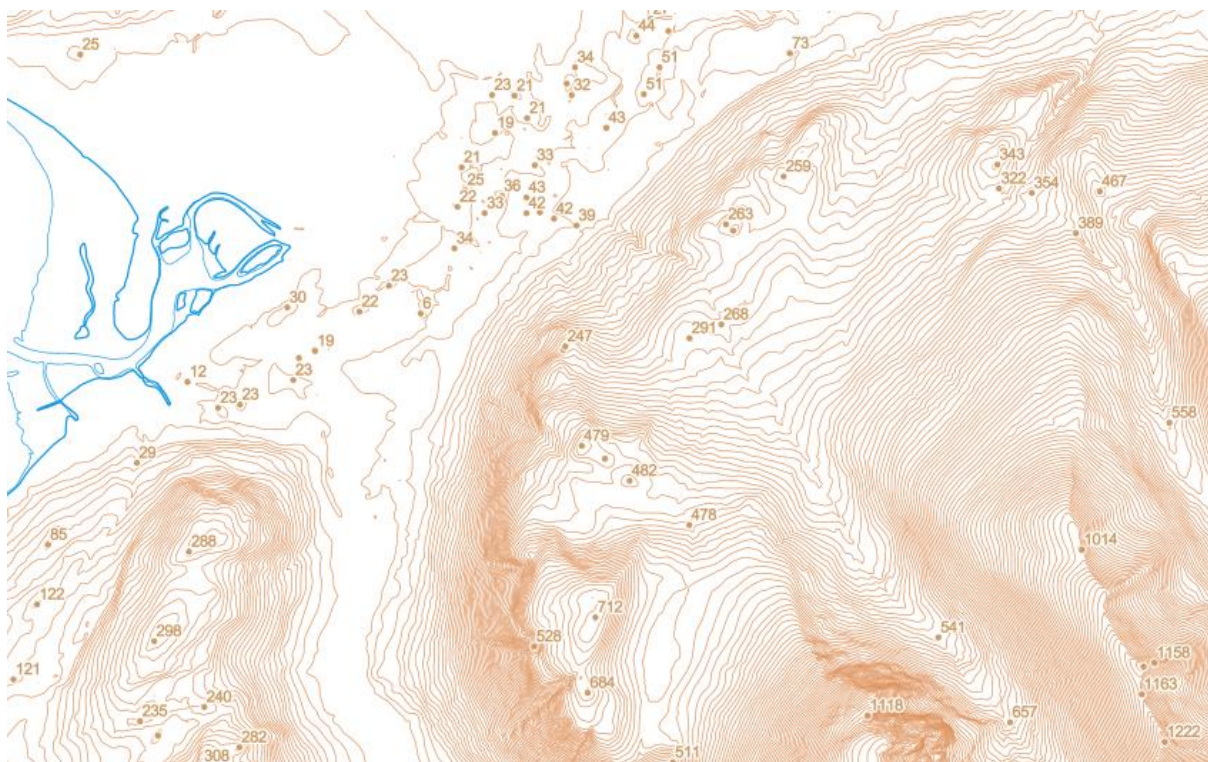
Drawing order	Layer	Default Style	Style	Remove
1 ↓	osgb:NN17_line		Terrain50_line	
2 ↑	osgb:NN17_point		Terrain50_point	

[<<](#) [<](#) [1](#) [>](#) [>>](#) Results 1 to 2 (out of 2 items)

The name of this Layer Group is the 'layer' your web map service (WMS) will need to call.

The scale denominators have been set to allow viewing between 1:1 000 and 1:500 000, although this will vary slightly by resolution.

Your map should look similar to this:



Compatibility notes

Although SLD is an open OGC standard, these SLDs do contain some extended code used by GeoServer, namely the 'vendor option' tags.

Additional information

[More information about how to download, apply and edit our stylesheets including a Stylesheet user guide](#)

[More information about OS Terrain 50](#)

[More information about cartographic design at Ordnance Survey](#)

Licence

By using these stylesheets you are accepting the terms of the [Open Government Licence](#).